



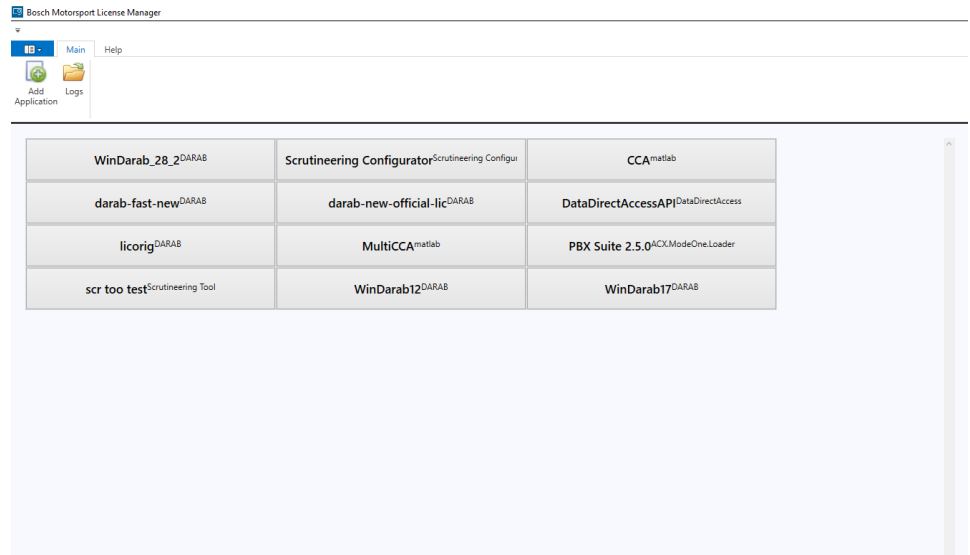
Bosch Motorsport

Bosch Motorsport License Manager

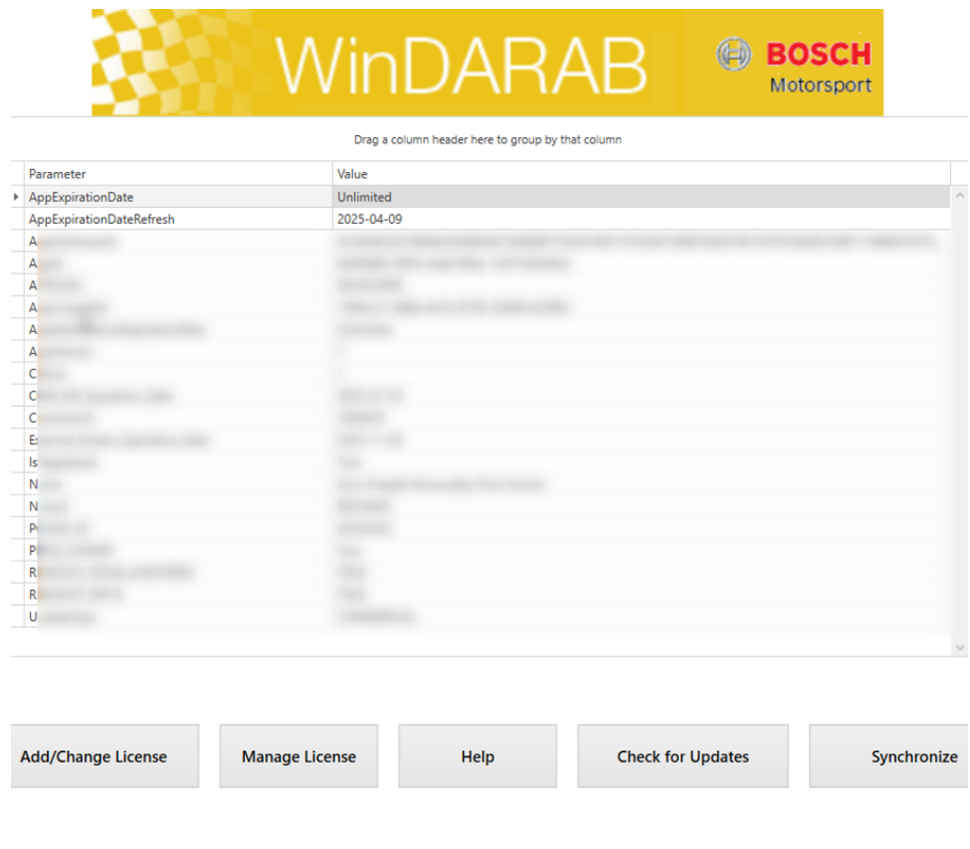
Function Description

1 License Manager

This simple tool helps in viewing the licenses used in Bosch Motorsport tool suite. The tool searches for Bosch Motorsport applications installed in all known paths and registries. Once the tool finds the corresponding supported applications, it displays them in the application overview panel as shown in the below figure.



On clicking the application name the license information is retrieved as shown in the below figure and displayed to the user.



Add/ Change License:

This button will launch the License client which accepts the license key or offline license file. This feature will work both online and offline.

Manage License:

This feature connects with Raceconnect to enable self-management of license slots. More on this feature in separate documentation. This feature will only work online. Watch this space (<https://www.bosch-motorsport.de/content/downloads/Raceparts/en-GB/383396363.html>)

Help:

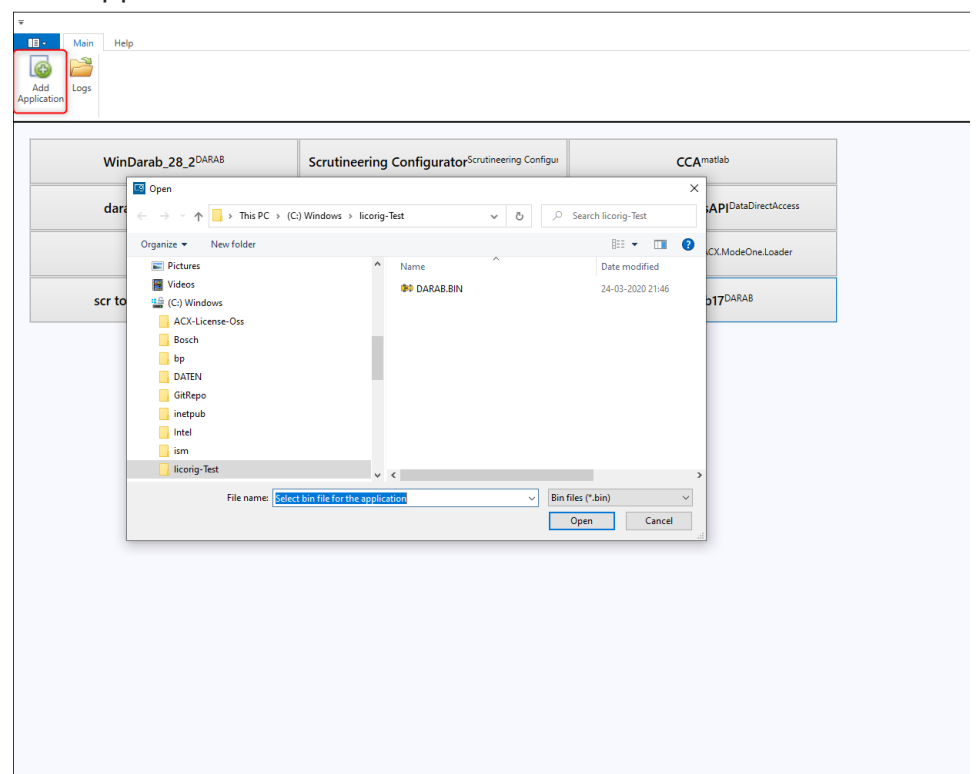
Launches the License section in Bosch motorsport homepage. This feature will only work online.

Check for Updates:

This feature connects with the server to check if there are any new license related updates are available at this point of time. It will be different for different applications. This feature will only work online.

Synchronize:

This feature synchronizes your local license with the server and displays the latest changes. This feature will only work online.

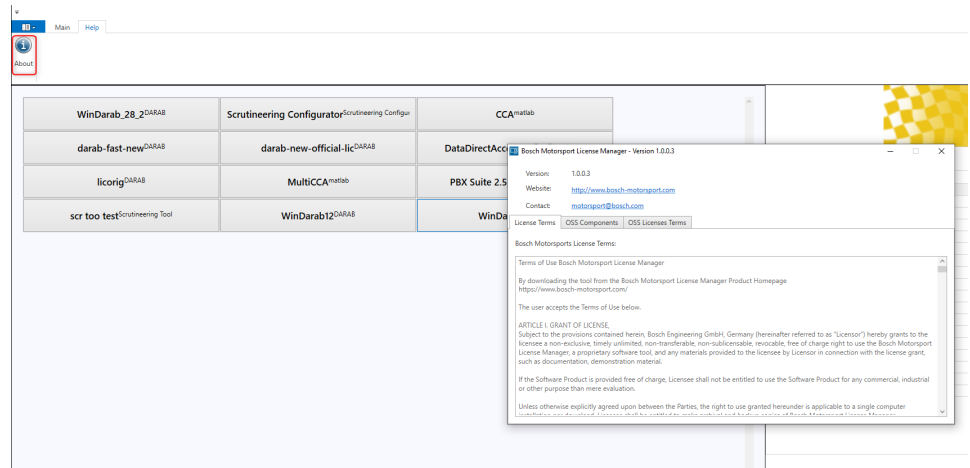
Add Application:

Logs:

The Log files can be accessed directly by clicking the Logs button in Ribbon menu. This file can be useful for resolving or troubleshooting any problems the user may face.

About:

The About dialogue in the Ribbon menu provides information about the license terms and third-party tools used in the application.



Bosch Engineering GmbH

Motorsport
Robert-Bosch-Allee 1
74232 Abstatt

www.bosch-motorsport.com